



Nano Banana in Photoshop

## Generative Fill with Nano Banana in Photoshop Beta

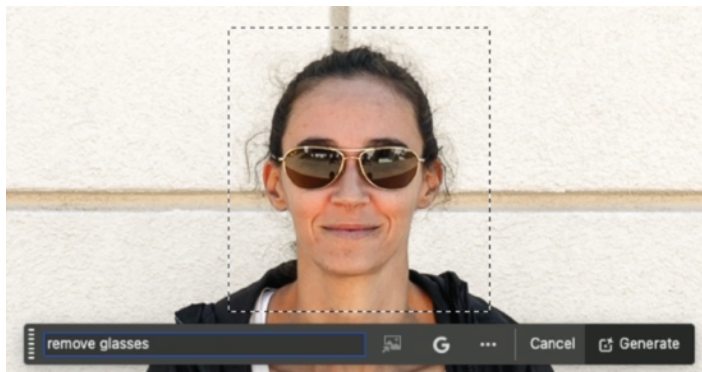
The Nano Banana AI imaging model within Photoshop's Generative Fill allows you to add, remove, or modify elements in your images without changing existing content.

The process involves these main steps:

1. **Selecting an Area:** Choose the specific part of your image you want to modify. Only the selected area will be uploaded to Nano Banana so it will be unaware of the appearance of the rest of the image. For seamless results, use the Selection Brush tool with a low hardness setting (below 50%).
2. **Choosing Generative Fill and Selecting Nano Banana:** Access the Generative Fill feature either in the Contextual Task bar, or by choosing Edit>Generative Fill, click on the model icon that is found to the right of the prompt text field and select the Nano Banana model. You can also experiment with "Flex Cortex," but Nano Banana usually produces a higher quality result.
3. **Entering a Text Prompt:** Describe the desired change in a text prompt. Use natural language to describe the area you'd like to change as well as any areas that should remain unchanged. Below, you'll find before-and-after images and the prompts that were used to create the transformation.
4. **Refining the Results:** You can also select the area again and explain further changes that you would like if the initial results were not satisfactory. Such as "Now change her shirt to blue".

**Note:** Unlike Adobe's standard Generative Fill, Nano Banana does not provide multiple variations.

### Removing Glasses and Retouching Shoes



"remove the smaller wrinkles in their clothes and make the bottom of their shoes all the same dark tones by darkening the bright areas"



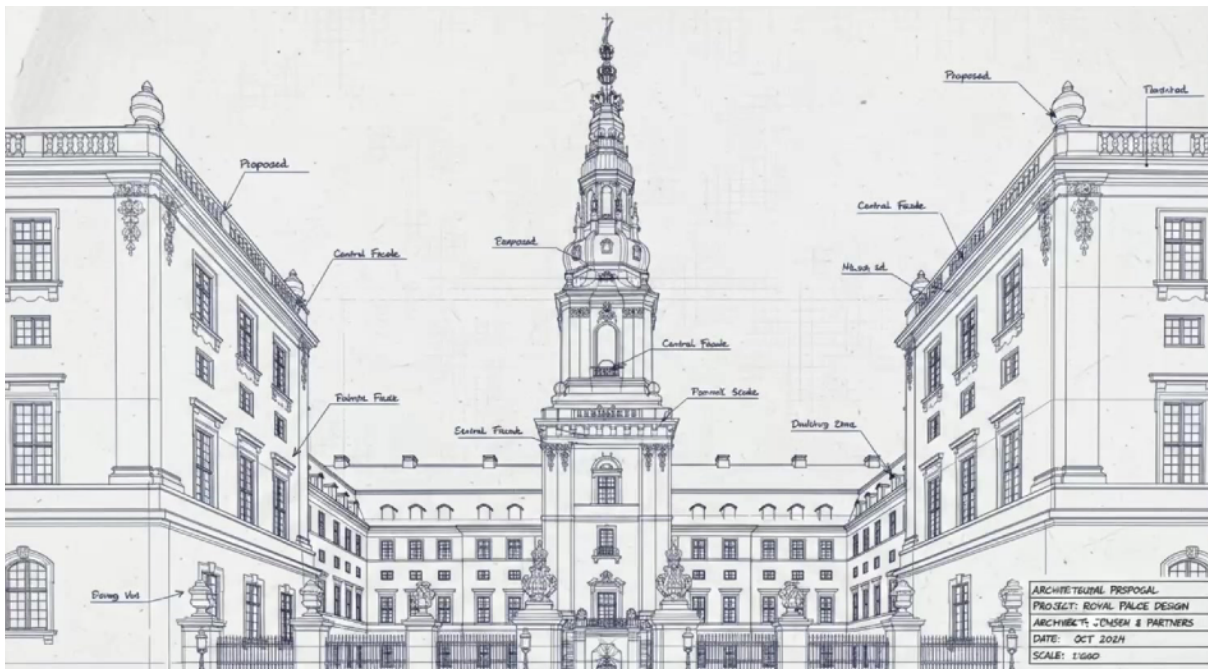
### Draping Fabric

"drape the white fabric so it covers her knees and calves"



### Architectural Rendering

"create a detailed architectural rendering as if proposed by a professional architect"





"a simplistic conceptual rendering of this building as if it was not been built yet and was just being proposed by the architect. Do not include any call-outs or text anywhere"



### Replacing Text

"replace the text with 'BEN'"



### Repositioning a Person

1st try: "move her to the top of the cliff at the top center of the image"







**2nd try:** "move her to the top of the cliff at the top center of the image without changing her pose or the direction she is facing"



**3rd try:** "without changing her pose or the direction she is facing. And I said move her to the top most part of the cliff"

## Changing Material

**1st try:** "make the ropes out of water"

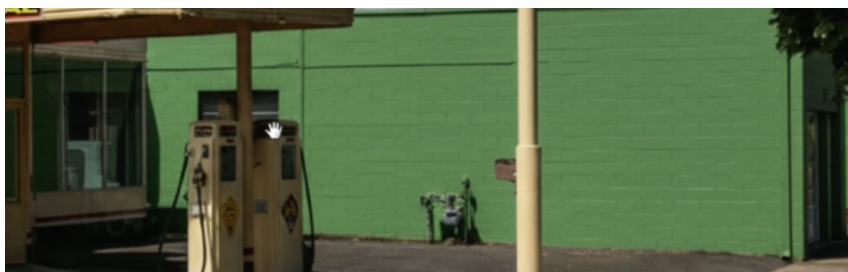


**2nd try:** "make the ropes out of clear fluid water"



### Removing a Mural

"remove the colorful mural and its reflection in the windows and replace it with green paint"



"make sure the wall appears as it appears in the window reflections where the mural is visible"

### Changing the Sky

"without changing the overall color of the building, and I also said, remove any wires that cross the sky and turn the green neon on in the smaller tower on the right"





## Removing a Fence

"remove the chain-link fence"



## Removing Shoes

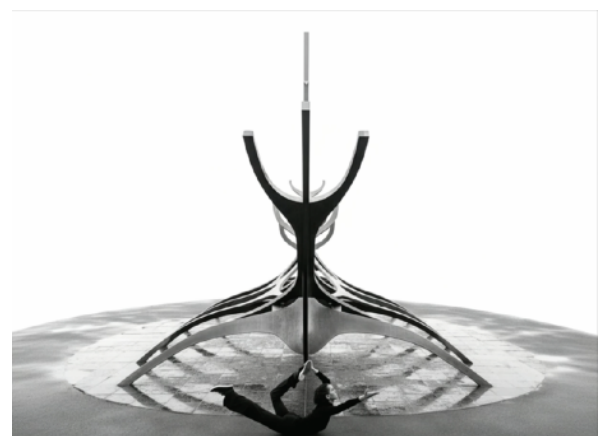
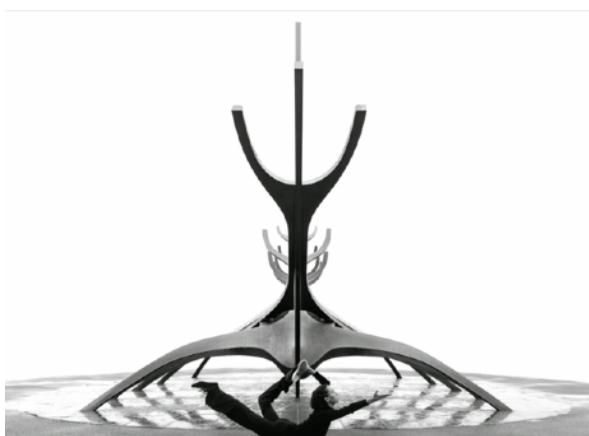
1st try: "make her barefooted"

2nd try: "remove her shoes so she is barefoot"



## Changing Perspective

"create a photo of this scene as if it was taken from a high angle looking down and include all the elements from the scene"





## Adding Motion Blur

"Use a slow shutter speed so the people who are standing are blurred as they move through the scene"



## Removing Objects

**1st try:** "remove all the people in the fencing and barricades"

**2nd try:** "remove all the people in the fencing and barricades without moving anything else in the scene"

**3rd try:** "remove all the people in the fencing and barricades while leaving the horse and wagon untouched"



## Aging and De-aging

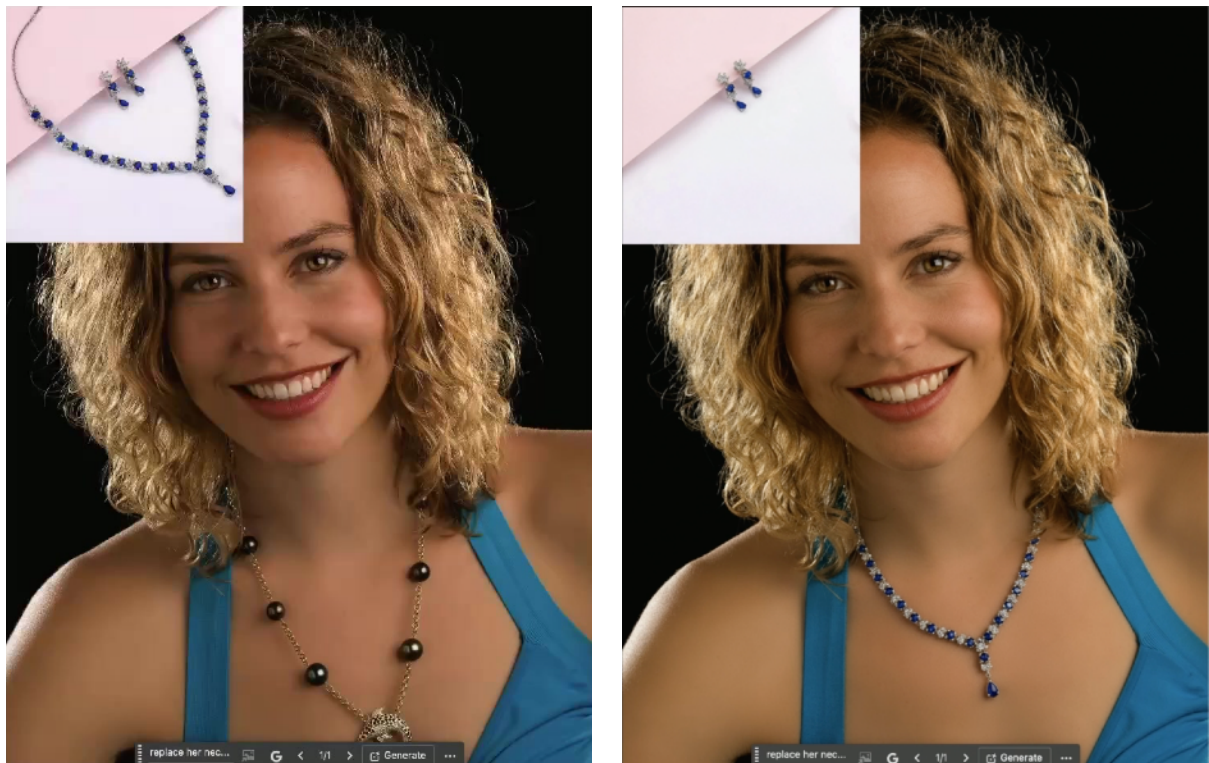
"de-age his face to make him appear youthful"

"age his face to make him appear much older"



## Replacing a Necklace

"replace her necklace with the blue one"





## Changing Time of Day and Season

"change the time of day to nighttime and add rain"



"illuminate the Scotty's neon sign on the left to match the one on the right"



## Car Modifications

"show me the same car rotated 180 degrees"





### Real Estate Photography

"change this to a nighttime scene and turn on the lights inside the building"



### Photo Restoration

"restore this photo and add color as if it was captured with a modern camera"



### Celebrity Replacement

"replace this person with Barack Obama while maintaining the pose and expression"



### Toy Figurine Creation

"turn him into a full-body 1-7th scale collectible figurine called Bennie Boy displayed inside toy packaging complete with toy tripod, camera and other photographic accessories in the packaging on a desk"

### Sofa Re-upholstery

"Re-upholster the brown sofa on the right using the fabric sample on the left while leaving the design of the sofa"



## Poster Creation

"create a poster for the Philco Predictive Postal TV using an illustrative style of 1950s featuring the TV shown here and the text "TV From the Future Today"



Predicta  
Pedestal



I would expect this new feature to be moved into the main version of Photoshop sometime in October since that's when Adobe's MAX conference happens and they like to add large new features to Photoshop.