



Color Tinting B&W Images

## Adding Color and Mood to Black and White Images

This guide will teach you how to add subtle color tints to black and white photographs to enhance their mood and personality. The expected outcome is a black and white image with a refined color tone that evokes a specific feeling, rather than a fully colorized photograph.

### Overview

There are two primary methods for adding color to black and white images:

- **Color Grading:** This is a traditional method that applies color to highlights, shadows, and mid-tones of the image. It's a quick way to establish an overall mood.
- **Masking and Selective Coloring:** This advanced technique allows for precise control over where color is applied. You can target specific objects, areas, or tonal ranges. Offers greater creative freedom and the ability to achieve sophisticated, nuanced color effects.

### Method 1: Using Color Grading

Color grading is a straightforward way to add a uniform color cast to your image.

#### 1. Access Color Grading:

- Navigate to the "Color Grading" section.
- You will see controls for Highlights, Shadows, and Mid-tones.

#### 4. Adjusting Highlights:

- Select the "Highlights" control.
- Drag the circular control outward towards the edge of the color wheel to choose a color.
- **Note:** Pure white areas in your image will not receive color. To allow color into the brightest parts, you may need to slightly lower the highlight brightness using the slider below the color wheel.
- To reset the color, double-click the circle.

#### 5. Adjusting Shadows:

- Select the "Shadows" control.
- Drag the circular control to select a color for the darker areas of your image.
- **Note:** Similar to highlights, pure black areas will not be colored. Use the slider below the shadow control to brighten black areas if you want color to appear.
- The closer you drag the circle to the center, the less intense the color. Dragging it to the outer edge increases intensity.

#### 6. Lock Hue or Saturation Shortcuts:

- **Shift Key:** Holding Shift while dragging the color circle locks the hue and allows you to adjust only the color's intensity.
- **Command/Control Key:** Holding Command (Windows: Control) while dragging locks the intensity and allows you to change only the hue while maintaining saturation.

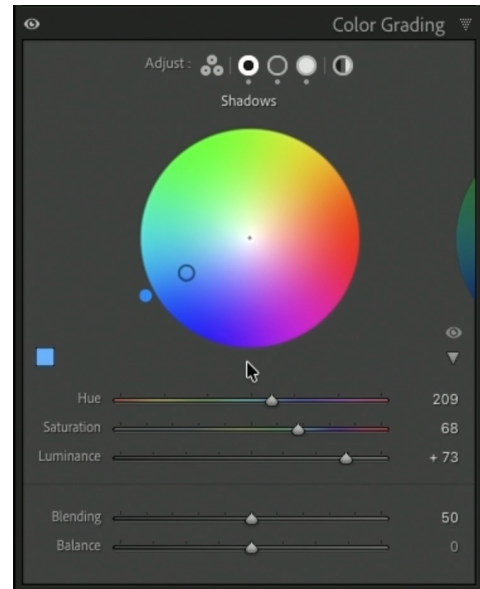


## 7. Adjusting Mid-tones:

- Select the "Mid-tones" control.
- Drag the circular control to add a color to the tonal range between highlights and shadows.
- You can also adjust the brightness of the mid-tones with the slider below.

## 8. Understanding the Color Wheel Layout:

- Up to three circles can be displayed simultaneously, representing highlights, shadows, and mid-tones.
- You can click on individual icons to adjust each tone separately, revealing a larger color wheel.
- Each individual control allows adjustment of Hue, Saturation (distance from the center), and Luminance (brightness).



## 9. Global Adjustments (Optional):

- There's a global adjustment option that applies color to the entire image. This is less common for nuanced tinting.

## 10. Blending Controls:

- **Balance:** This slider determines the influence of highlights versus shadows. Moving it in one direction gives more dominance to highlight colors, while the other direction favors shadow colors.
- **Blending:** This slider controls how smoothly the colors transition between highlights, mid-tones, and shadows. Higher values create more aggressive blending, while lower values create more separation.

## Method 2: Masking and Selective Coloring

This method offers precise control by applying color to specific areas of the image.

### 1. Create a Mask:

- Go to the "Masking" section.
- You can create masks based on objects, subjects, skies, backgrounds, or use brush or gradient tools.
- For example, to select icebergs, you might use the "Object Selection" tool.

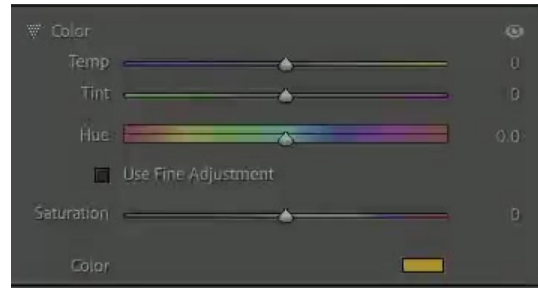
### 12. Invert the Mask (if needed):

- If your initial mask selects the wrong area (e.g., the icebergs when you want the water), click on the ... shown to the right of the mask name and use the "Invert" option to select everything *but* the icebergs.



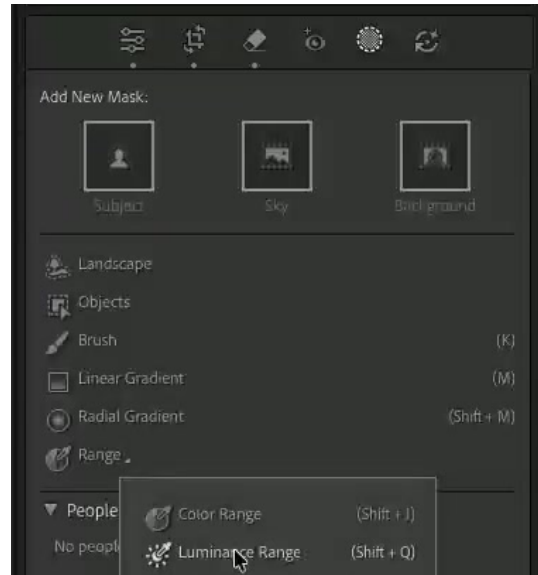
### 13. Apply Color:

- With a mask active, locate the "Color" option (often a colored rectangle).
- Click the rectangle to open a color picker and choose your desired hue and saturation.



### 14. Refining Masks with Luminance Ranges:

- To apply color based on brightness, use the "Luminance Range" mask.
- This allows you to define a specific brightness spectrum where the color will be applied.
- You can control the fade-out of the color using the sliders on either side of the range.

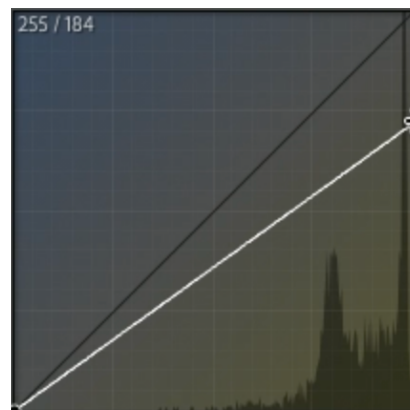
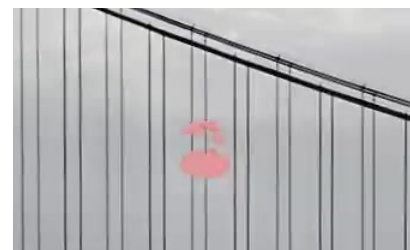


### 15. Applying Color to Different Tones:

- You can create separate masks for highlights, mid-tones, and shadows using Luminance Range.
- **Highlights:** Adjust the Luminance Range to capture the brightest parts.
- **Shadows:** Adjust the Luminance Range to capture the darkest parts.
- **Mid-tones:** Adjust the Luminance Range to capture the middle tones.

### 17. Using Curves for Forceful Color:

- For situations where other methods are insufficient, the "Curves" adjustment can be used.
- Each color channel (Red, Green, Blue) has an opposite. For example, reducing Red adds Cyan, and reducing Blue adds Yellow.
- Pulling down on the Blue channel (opposite of Yellow) can add yellow to bright areas, like the sun.



### Summary

We explored two powerful methods for adding color and mood to black and white photographs: the straightforward Color Grading tool and the more versatile masking techniques. By understanding Color Grading, you can quickly establish an overall tone for your images. By mastering masking, you gain the precision to selectively apply color to specific areas, objects, or tonal ranges, allowing for highly customized and artistic results.